

House & Land Kerikeri



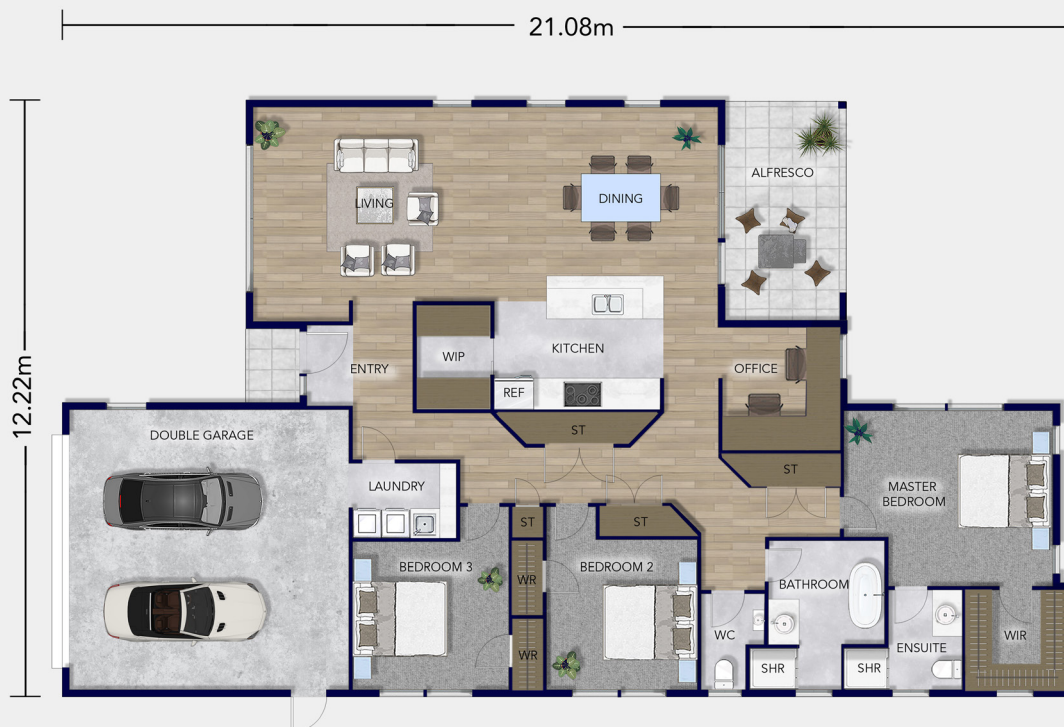
📍 21 Te Uru Lane,
Kerikeri

FROM \$1,180,000

This house and land package is positioned to receive plenty of North West sun and offers great outdoor living on a 604 sqm section. The plan is based on our stunning urban-style Clevedon design, which features impressive raked ceilings in the living and dining areas with large gable windows, creating a light and warm relaxing space.

 **Platinum
Homes**
Everything You Call Home

Floorplan Clevedon



Three spacious double bedrooms are designed for comfort and privacy; this includes a luxurious master suite with a walk-in wardrobe and private ensuite. A superbly appointed family bathroom and a separate toilet cater to the whole family for everyone's convenience.

In the heart of the home, a designer kitchen with a walk-in pantry and a large central island makes cooking and entertaining a breeze. The living areas, with a large lounge and dining area, flow out to a superb alfresco entertainment area. There is also a separate office for studying, flexible working or

running a home-based business. Walk through the dedicated laundry and into the spacious double garage, which provides security and storage.

This prime location is a convenient 10-minute walk to central Kerikeri, local restaurants, cafes, vineyards, local amenities and schools, a short drive to numerous stunning beaches, and the towns of Paihia, Waitangi and Russell steeped in history.

*Concept pricing only. Price is subject to change based on specifications and inclusions.



Total Floor (m2) 194



1



3



2



2



2

Love this home? Get in touch

Adam Partridge

Licensee

027 248 5510

adam.partridge@platinumhomes.co.nz

Dimensions, images and floorplan are indicative only — not to scale.

Floorplan ©2021 Platinum Homes NZ Ltd — not to be reproduced without permission of the copyright holder.

**Platinum
Homes**
Everything You Call Home