

House & Land

Kerikeri



📍 3 The Lakes Drive, Kerikeri

FROM \$1,310,000

This superb property is an absolute gem for any family desiring a contemporary, low-maintenance lifestyle. Based on the Platinum Homes Arakura plan, this 232 sqm home is located on a prime 3000 sqm section in a new rural subdivision close to Kerikeri in the Bay of Islands.

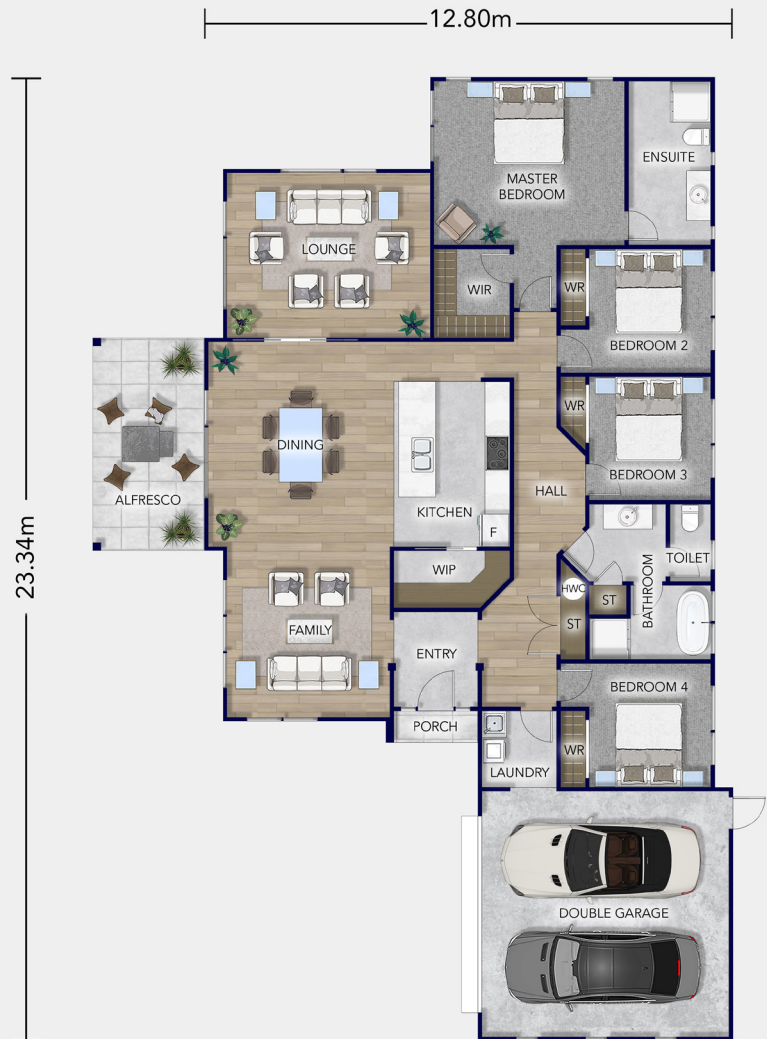
 **Platinum
Homes**
Everything You Call Home

Floorplan Arakura

Boasting three generously sized double bedrooms with ample space to cater for a growing family, plus a master suite that is a haven of indulgence, featuring a walk-in wardrobe and a luxurious ensuite that will make you never want to leave. The family bathroom is elegant, spacious and accommodating, providing the perfect space for rejuvenation after a long day.

Central to the floor plan is a contemporary kitchen with a free-standing island and a walk-in pantry, providing plenty of storage and a perfect space for meal preparation. A large alfresco dining area is the perfect spot to host dinner parties or to spend quality time with your loved ones in the fresh outdoors.

These open-plan living spaces are thoughtfully designed to offer privacy while still allowing for the perfect space to gather and entertain. In addition, there is a peaceful retreat on offer in the separate lounge, the ideal zone for unwinding and relaxation.



 Total Floor (m2) 232

 2

 4

 2

 2

 2

Love this home? Get in touch

Adam Partridge

Licensee

027 248 5510

adam.partridge@platinumhomes.co.nz

**Platinum
Homes**

Dimensions, images and floorplan are indicative only — not to scale.

Floorplan ©2021 Platinum Homes NZ Ltd — not to be reproduced without permission of the copyright holder.