

# House & Land

# Rotorua



📍 9 Tūrepo Way, Owhata,  
Rotorua

FROM \$810,000

This Platinum Homes house and land package features a stylish, comfortable 151 sqm design set on an easy-care 458 sqm section. Featuring contemporary design elements and high-quality finishes throughout, it caters perfectly to the needs of families, professional couples, and those seeking to downsize.

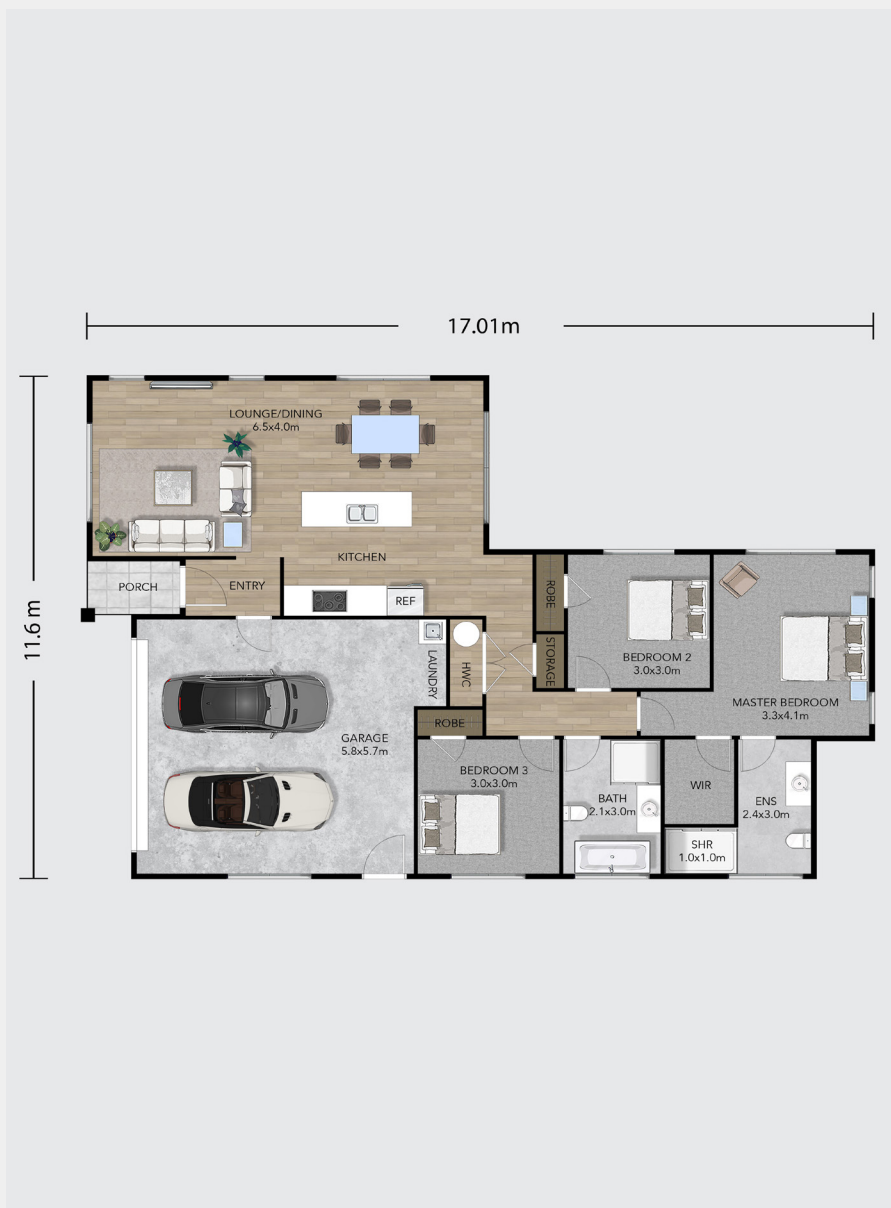
 **Platinum  
Homes**  
*Everything You Call Home*

# House & Land Rotorua

Comprising of three generously proportioned double bedrooms, including a deluxe master suite with a private ensuite and walk-in wardrobe, this home offers ample space for comfortable living. The well-appointed family bathroom and double garage with laundry facilities provide convenience for all.

The open-plan layout creates a seamless flow between kitchen, dining, and living areas, making it perfect for both everyday living and entertaining guests. The kitchen showcases a central island and quality appliances. Low maintenance and functional it's the perfect space to hang out with family and friends or lock up and head away for a long weekend, knowing you won't be coming home to a heap of chores.

Explore the best of Rotorua right outside your doorstep with Rotorua Central less than a fifteen-minute drive away.



 Total Floor (m2) 151

 1

 3

 2

 2

 2

Love this home? Get in touch

**Jamie Macdougall**  
New Home Sales Consultant  
027 672 2162  
[jamie.macdougall@platinumhomes.co.nz](mailto:jamie.macdougall@platinumhomes.co.nz)

 Platinum Homes

Dimensions, images and floorplan are indicative only — not to scale.

Floorplan ©2021 Platinum Homes NZ Ltd — not to be reproduced without permission of the copyright holder.