

House & Land Rodney



 Helensville, Rodney

FROM \$1,076,000

This 147 sqm home, matched with a generously sized 560 sqm section, offers versatile indoor and outdoor space. Whether you want to host gatherings, enjoy outdoor hobbies, or relax in the fresh air, this property provides the perfect setting.

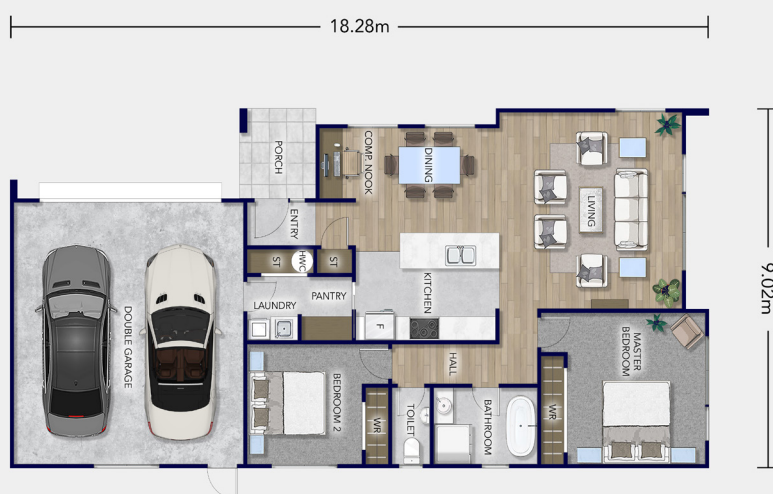
 **Platinum
Homes**

Everything You Call Home

Floorplan Manui

The Platinum Manui plan offers a contemporary urban design, featuring a visually striking monopitch roof and modern cladding to create an appealing exterior. As you step inside, you'll be greeted by a thoughtfully designed layout that seamlessly combines functionality and style.

This home is designed with your comfort in mind. The open-plan living area, complete with a convenient walk-through pantry and laundry, offers a spacious and inviting atmosphere for gatherings and relaxation. With two generously sized bedrooms, a separate toilet for added privacy, and a dedicated computer nook that can double as a home office or study area, this home is all about comfort and practicality. The double-car garage provides ample room for vehicle storage and the potential for a workspace, adding to the home's functionality.



Total Floor (m2) 147



1



2



1



1



1

Love this home? Get in touch

Richard Barrington

New Home Sales Consultant

021 619 509

richard.barrington@platinumhomes.co.nz

Dimensions, images and floorplan are indicative only — not to scale.

Floorplan ©2021 Platinum Homes NZ Ltd — not to be reproduced without permission of the copyright holder.

 **Platinum
Homes**