

House & Land

Paerata Rise

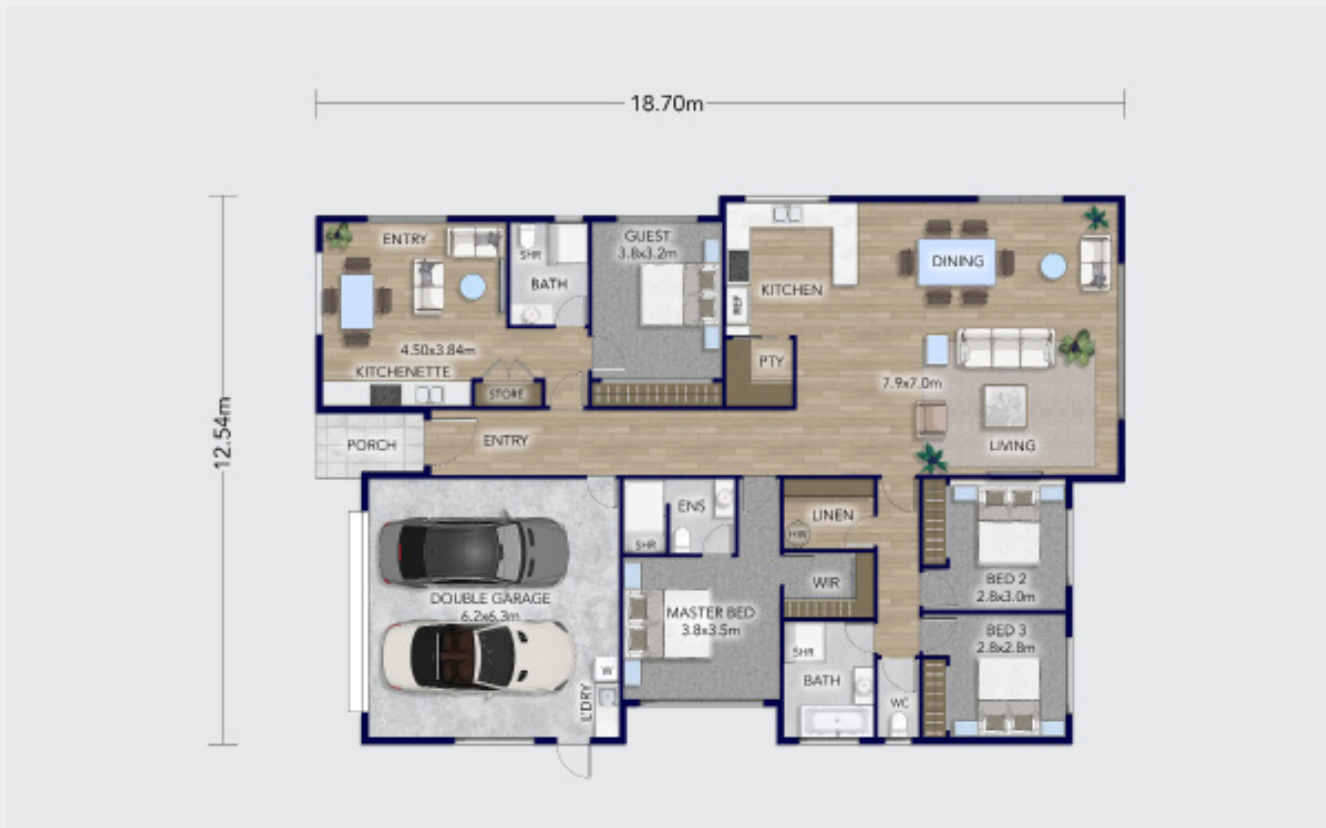


📍 Lot 29, Te Rata Boulevard

FOR SALE \$1,649,000

This stylish home is about versatile design and spans across a spacious 237 sqm on a generous 608 sqm section. The contemporary design elements and high-quality finishes of this home command attention.

**Platinum
Homes**
Everything You Call Home



The main area of this house features three generously proportioned double bedrooms, including a deluxe master suite with a private ensuite and walk-in wardrobe, family bathroom, open plan living, dining and kitchen and double garage with laundry facilities.

Attached is another large, fully self-contained one-bedroom unit with a separate entry. It is perfect for homeowners with ageing relatives who wish to remain independent or adult children who choose

to stay home for longer. Here, families can enjoy living together with both comfort and privacy.

Secondary spaces as part of a home build also offer opportunities for home offices or for providing additional income by renting to long-term tenants or Airbnb guests.

This home boasts two living areas that are meticulously designed to provide a high-quality experience.



Total Floor (m2) 237



Love this home? Get in touch

Laurene Lindor
New Home Consultant
021 273 2488
laurene.lindor@platinumhomes.co.nz

Michael Blackwood
New Home Consultant
027 421 2764
michael.blackwood@platinumhomes.co.nz

