

House & Land

Matamata



 HAMPTON TERRACE

FROM \$1,083,000

Escape the rat race and the traffic when you come home to Hampton Terrace in Matamata. There's all the benefits of living in a small town, such as safe communities, free parking and no traffic lights, but it's close enough to Hamilton and Tauranga to enjoy the city life.

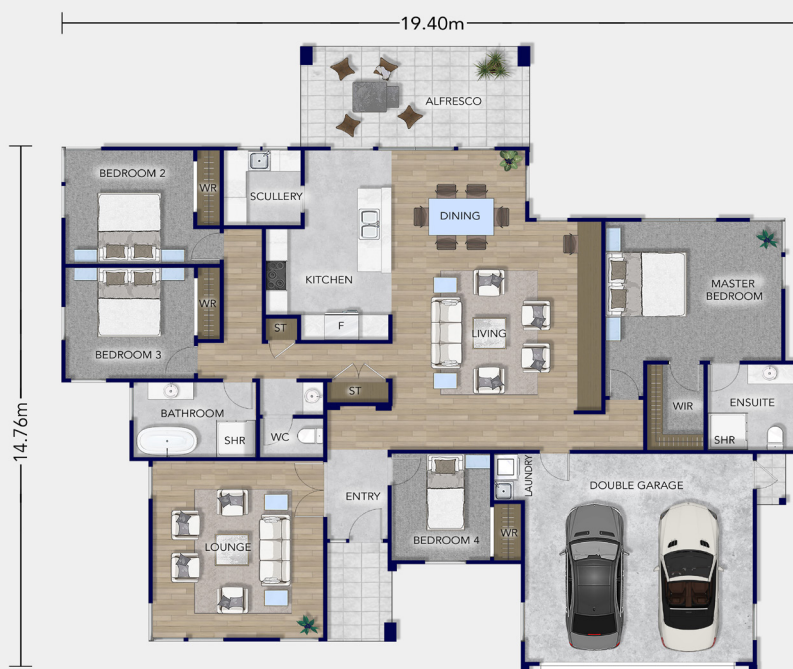
 **Platinum
Homes**
Everything You Call Home

Floorplan Kererū

At Hampton Terrace, the 231sqm urban style Kererū plan set on a 650sqm section is perfect for a growing family. There are four bedrooms, including a spacious master with a generous sized walk-in wardrobe and separate ensuite. Bedrooms two and three are large doubles, and the fourth slightly smaller could serve either as a bedroom or as an office if you work from home.

The kitchen is a dream with a central island and walk-in scullery, and if entertaining is your thing, you will love the large alfresco dining area for hosting dinner parties or simply spending quality family time with your loved ones.

You will be impressed by the open plan and natural flow of this home and the layout of the spaces which achieves just the right measure of separation and privacy.



Total Floor (m2) 231



2



4



2



2



2

Love this home? Get in touch

Brad Wheeler

Licensee

027 687 8171

brad.wheeler@platinumhomes.co.nz

Angela Wheeler

Licensee

027 687 8177

angela.wheeler@platinumhomes.co.nz

**Platinum
Homes**

Dimensions, images and floorplan are indicative only — not to scale.

Floorplan ©2021 Platinum Homes NZ Ltd — not to be reproduced without permission of the copyright holder.