


House & Land

Rodney



 Puhoi, Rodney

FROM \$1,880,000

Our expansive Onemana floor plan boasts a generous 313 sqm, with ample room to accommodate a growing family, extended guests, or potential tenants. The main living area features four bedrooms, a media room, and an open-plan layout ideal for family time.

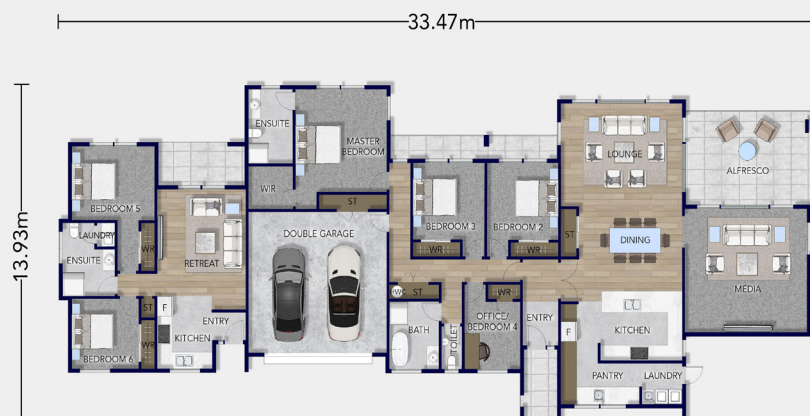
 **Platinum
Homes**
Everything You Call Home

Floorplan Onemana

This stunning house and land package not only offers the perfect blend of space, comfort, and functionality but also presents a potential income opportunity. It's a home for those seeking a versatile living space and a smart investment.

A separate, self-contained wing with two additional bedrooms and a semi-ensuite is perfect for extended family, guests, or even a home and income opportunity.

Beyond your doorstep, you will discover the magic of Puhoi, a charming historic riverside village settled by Bohemian refugees in the 1860s. Here, you can kayak down the river to Wenderholm Regional Park or enjoy a leisurely lunch at a local cafe or pub meal in the historic Puhoi Hotel Puhoi. Plenty of recreational opportunities and modern amenities are just a short drive away.



Total Floor (m2) 313



3



6



3



3



2

Love this home? Get in touch

Richard Barrington

New Home Sales Consultant

021 619 509

richard.barrington@platinumhomes.co.nz



Dimensions, images and floorplan are indicative only — not to scale.

Floorplan ©2021 Platinum Homes NZ Ltd — not to be reproduced without permission of the copyright holder.