

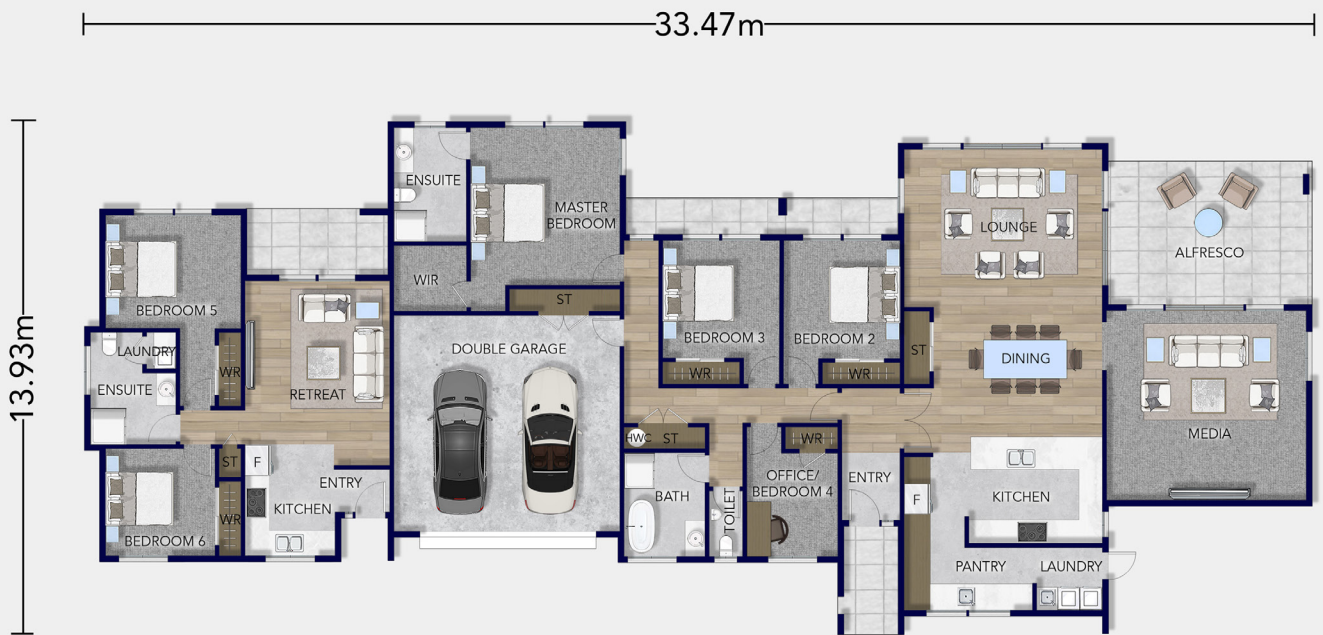
Floorplan Onemana



The spacious Onemana is made up of six bedrooms and three bathrooms across 313sqm. Ideal for home and income opportunities or multi-generational living. This home features four bedrooms, a spacious media room and open plan living in the main centre, and another two bedrooms with a semi-ensuite in a separate, self-contained wing.

 **Platinum
Homes**
Everything You Call Home

Floorplan Onemana



Total Floor (m2) 313



3



6



3



3



2

CONTACT US

0508 752 846

www.platinumhomes.co.nz



Dimensions, images and floorplan are indicative only — not to scale.

Floorplan ©2021 Platinum Homes NZ Ltd — not to be reproduced without permission of the copyright holder.